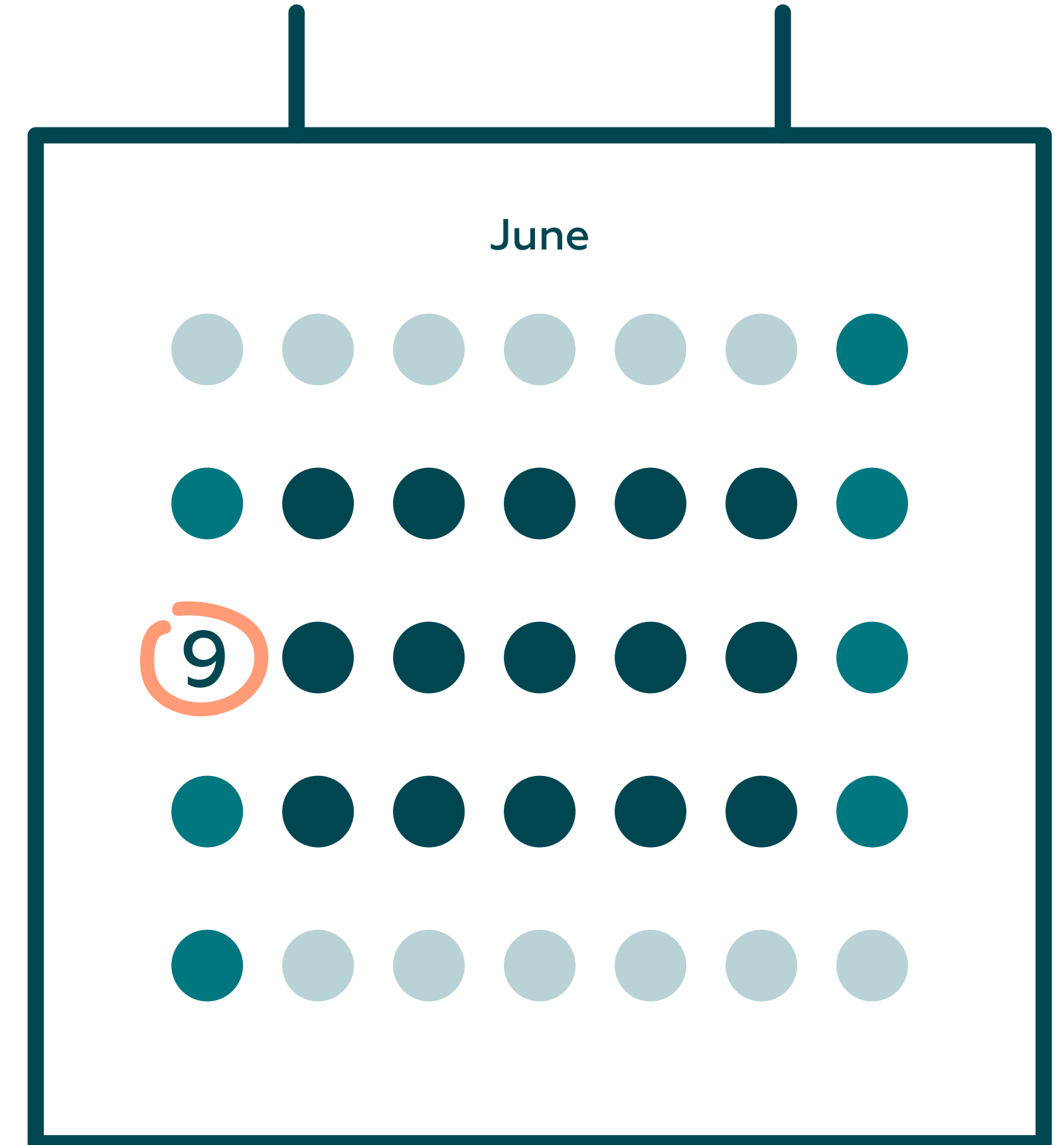




Informative Note

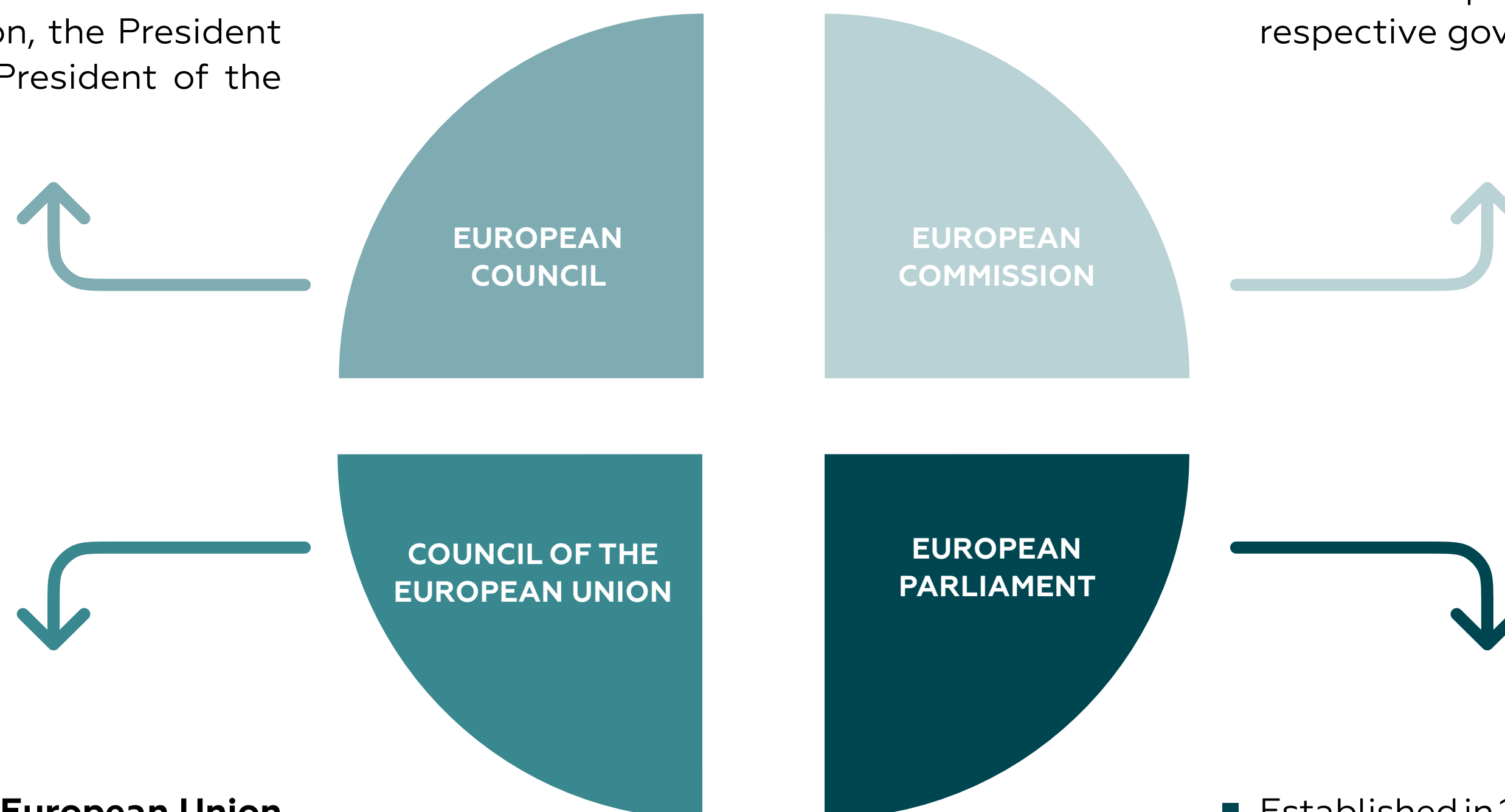
JUNE 2024

■ **European Elections 2024**



The European Union is made up of **7 (seven)** **bodies**, the main institutions of which are:

- Formally founded in 1992, the **European Council** represents the highest level of co-operation between the countries of the European Union, since it brings together the Heads of State or Government of all the countries of the European Union, the President of the European Council and the President of the European Commission.

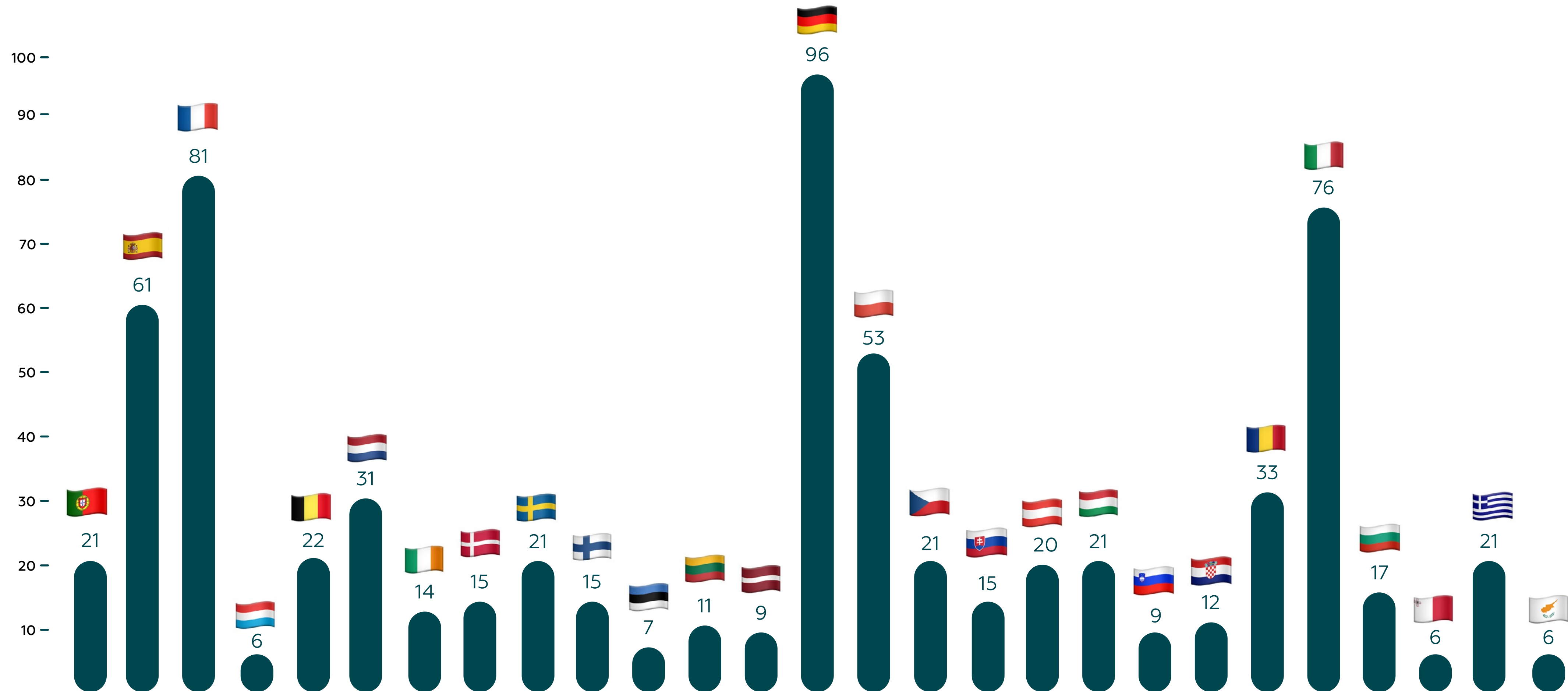


- Established in 1958, the **European Commission** acts in the common interest of the European Union, placing it above the individual interests of each member state. It is made up of 27 commissioners, appointed by their respective governments.

- Created in 1958, the **Council of the European Union** brings together representatives of the governments of each member state. Ministers are authorised to make commitments on behalf of their governments in relation to the measures approved at the meetings.

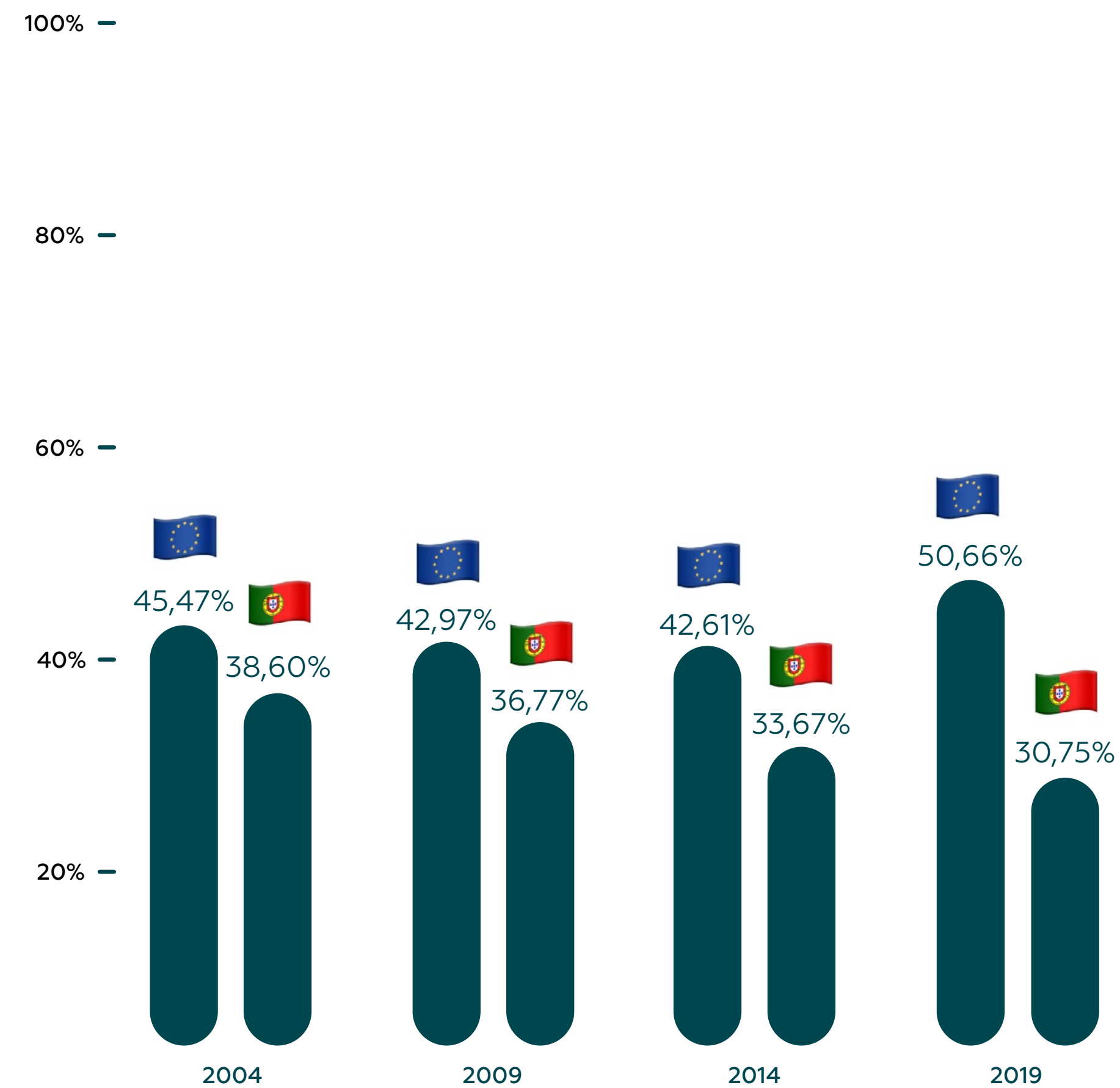
- Established in 1952, the **European Parliament** represents the democratic nature of the European Union, balancing the institutions belonging to it. Elections to the European Parliament take place every 5 years. In the 2019-2024 legislature, the Parliament is made up of 705 members.

■ 720 deputies



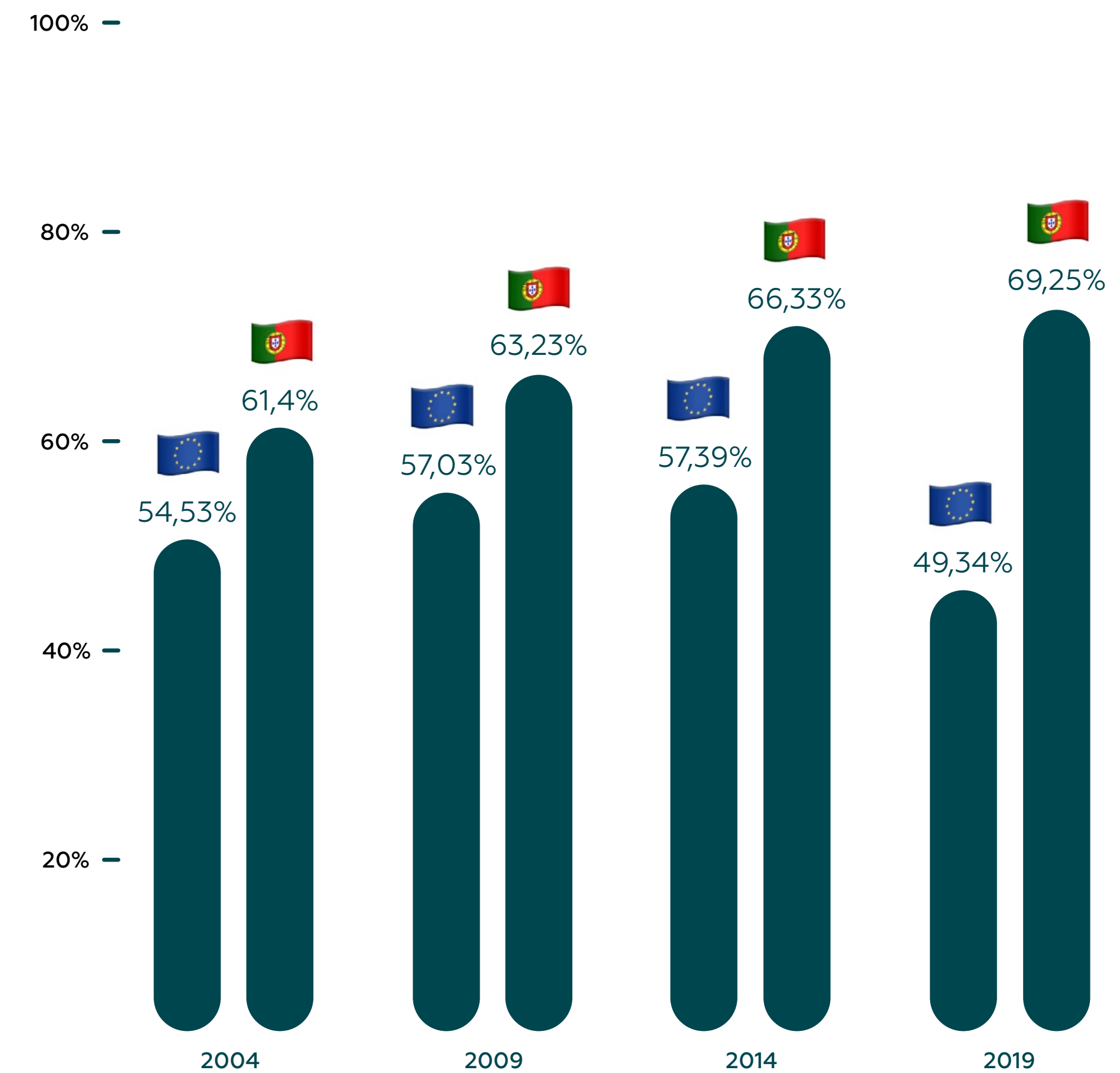
* number of MEPs elected per country

■ **Voter turnout** has fluctuated over time:



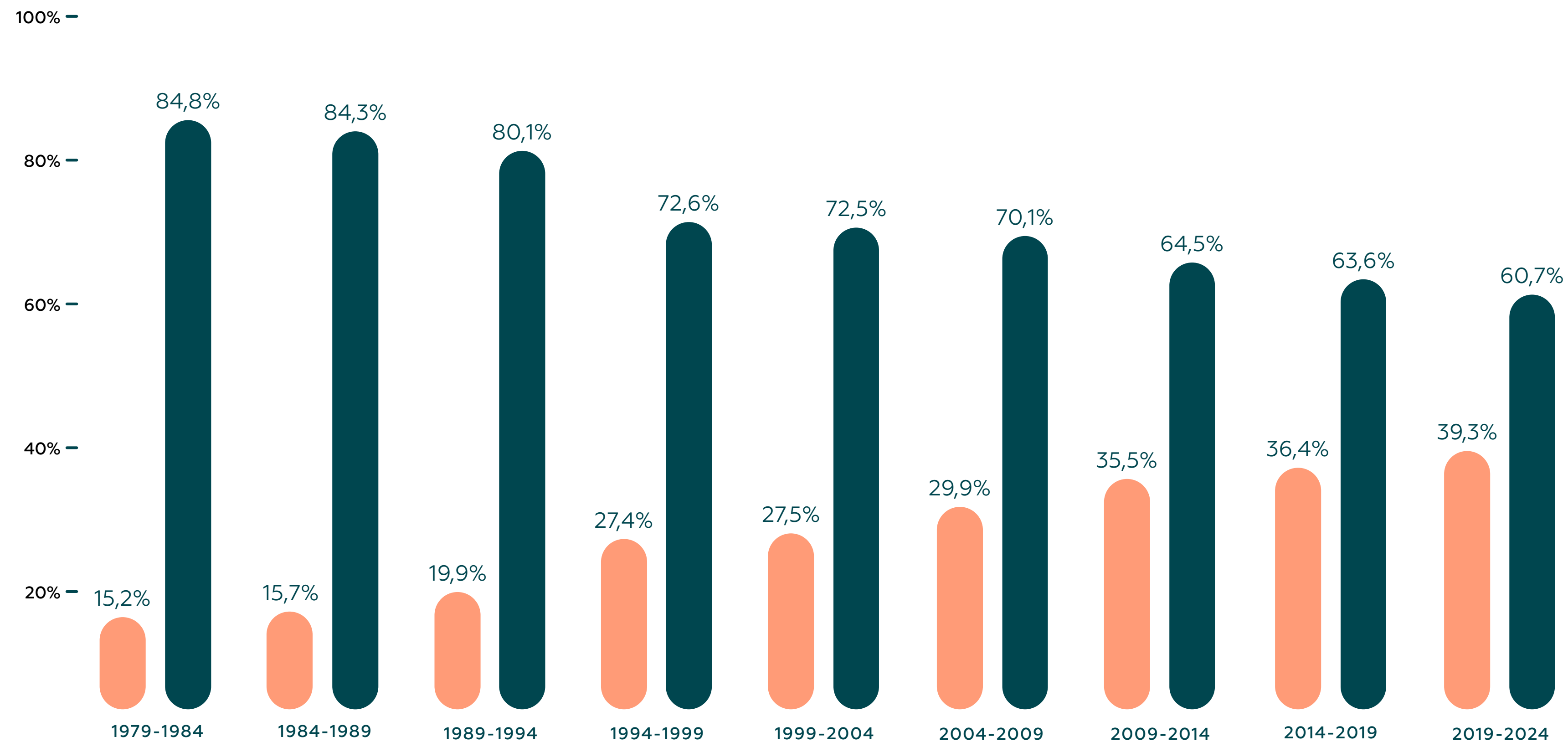
Source: European Parliament

■ **Abstention** while at European level it has fallen, the opposite is true at national level: until 2019, Portugal saw a sharp percentage increase, reaching an abstention rate of 69,25% in 2019.



■ Percentage of **women** and **men** in the European Parliament

The figures for the 2019-2024 legislature reflect the situation on the 31st January 2022, while the figures for previous legislatures indicate the average percentage for the respective period.

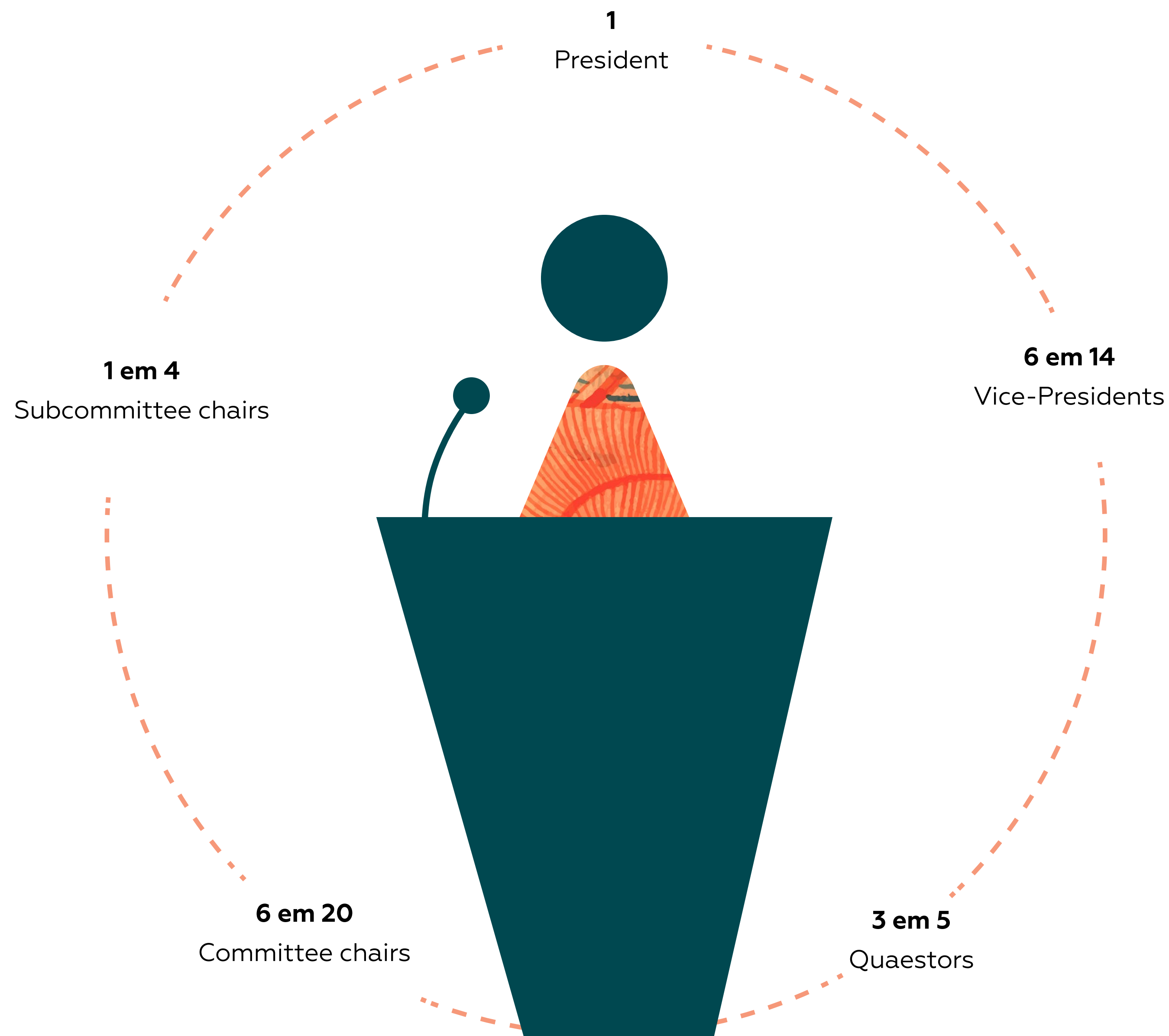


■ **Women** in a prominent position in the European Parliament

The number of women in the European Parliament tends to be higher than the world (and European) average for national parliaments.

In fact, since January 2022, the European Parliament has been chaired by a woman: Maltese MEP Roberta Metsola.

In the current parliamentary term (2019-2024), the following figures stand out with regard to the number of women present in the European Parliament:



DOWER

LAW FIRM



Rua Antero de Quental, 939
4200-070, Porto
Portugal

Porto · Lisboa · Funchal

www.dower.pt

T +351 223 166 418

E dower@dower.pt